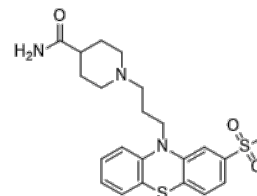


Product Name : Metopimazine
Cat. No. : PC-24638
CAS No. : 14008-44-7
Molecular Formula : C₂₂H₂₇N₃O₃S₂
Molecular Weight : 445.60
Target : Dopamine Receptor
Solubility : 10 mM in DMSO



Biological Activity

Metopimazine is a selective, peripherally restricted dopamine D2 receptor (D2R) antagonist, has potential for the symptomatic treatment of nausea and vomiting and chemotherapy-induced nausea and vomiting.

References

Busby RW, et al. Pharmacol Res Perspect. 2022 Feb;10(1):e00903.

Caution: Product has not been fully validated for medical applications. Lab Use Only!

E-mail: tech@probechem.com